

## SMT Tools

### LabScope WiFi Digital Wireless Microscope.

**Designed for Ipad, Iphone and Android Tablets and Phones**



The LabScope Wifi is a handheld digital wireless microscope with 5x to 200x magnification for use in inspection of electronics, medical devices, forensics, hair and skin, printing, animal laboratory, educational purpose and many other applications. Whether in the lab, field, or classroom, you just need the LabScope and your Tablet or phone. It creates it's own dedicated wireless link and includes a 2 hour rechargeable lithium battery.

#### **Specifications:**

**Image Sensor:** Color CMOS Sensor

**Resolution:** 640 x 480 Pixels

**Focus Range:** 0 mm to 40 mm

**Frame Rate:** 20f/s under 600 lux brightness

**WiFi standard:** IEEE 802.11 b/g/n standards compliant

**Magnification:** 5x-200x manually.

**Video Format:** .Avi

**Photo Format:** .jpeg or .bmp

**Light Source:** Built in 8 white LED adjustable

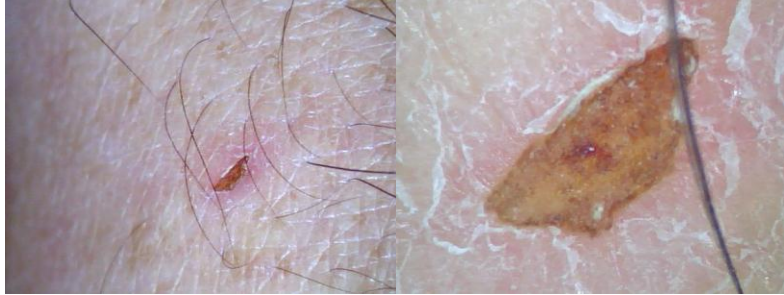
**Power Supply:** Rechargeable lithium battery

**Operation System:** WiFi capable for IOS and Android Tablets and phones.

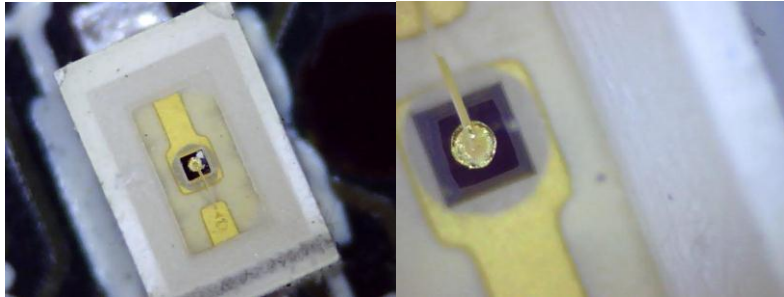
**Bundle Software:** HotViewer

## Sample Images at various magnifications.

*Skin abrasion.*



*Internal parts on electronic components*



*Fabric on blue jeans*



SMT Tools, LLC  
P.O. Box 90  
Lake Hopatcong NJ 07849  
Tel: 973-945-9847  
Fax: 973-663-1745  
e-mail: [sales@smttools.com](mailto:sales@smttools.com)  
[www.smttools.com](http://www.smttools.com)